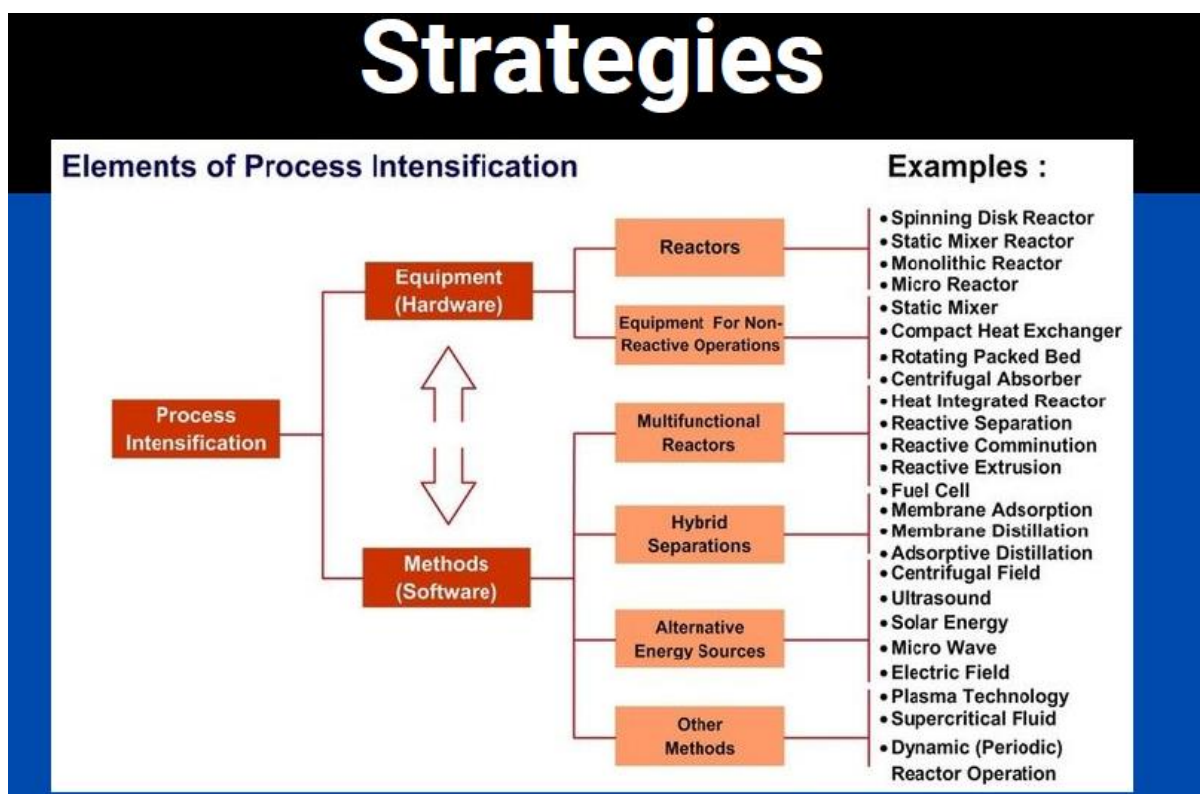
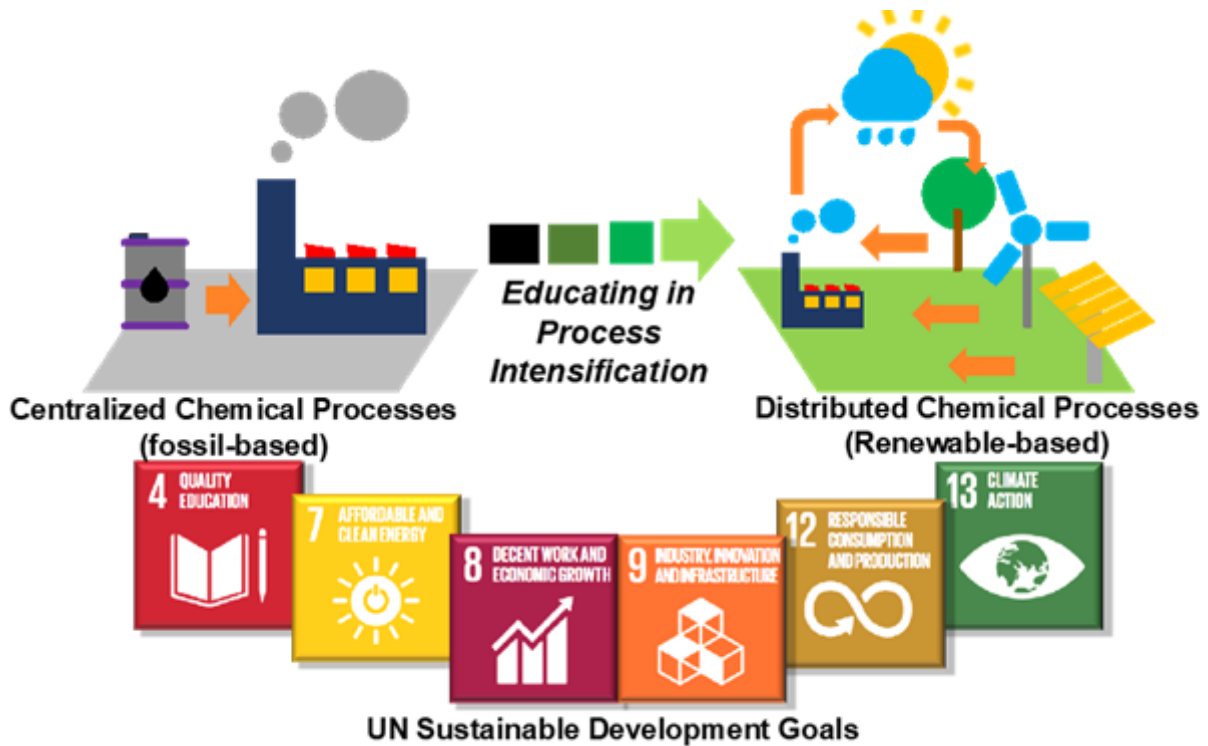
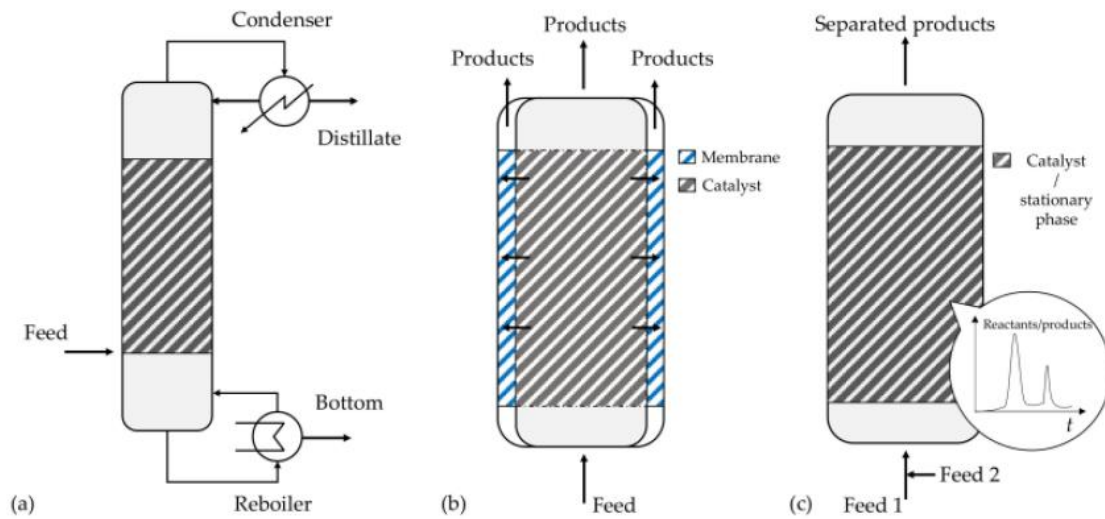


## One Day Seminar on Chemical process intensification

In accordance with DA/MP/2024/120, a one day seminar on “**Chemical process intensification**” was conducted for Chemical Engineering students of II<sup>nd</sup>, III<sup>rd</sup> and IV<sup>th</sup> Year (In house Project students) on 24<sup>th</sup> Jan 2024 in Chemical Engineering Computer Lab. The topic of seminar is in accordance with current retrofit processes that aim at integrating two or more technologies to enhance conversion without sacrificing product quality by increasing efficiency, reducing energy consumption, costs, volume, and waste as well as improving safety. The seminar was delivered by Prof Shivangi Sharma; Session 1 includes the strategies of Process Intensification, Examples of PI and importance of educating in Process Intensification in achieving Sustainable Goals



# Example



Session 2 was hands-on practise of simulating example of Reactive Distillation as a process intensified technique using DWSIM a CAPE-OPEN compliant Chemical Process Simulator.



To evaluate the learning outcome assignment and quiz were given on moodle. Also related content is also uploaded.

mitsmoodle Important Links Notice Board Virtual Labs T&PCounselling Cell & Clubs EXAM & Library Moodle2020 Ms. Shivangi Sharma

LECTURE 1

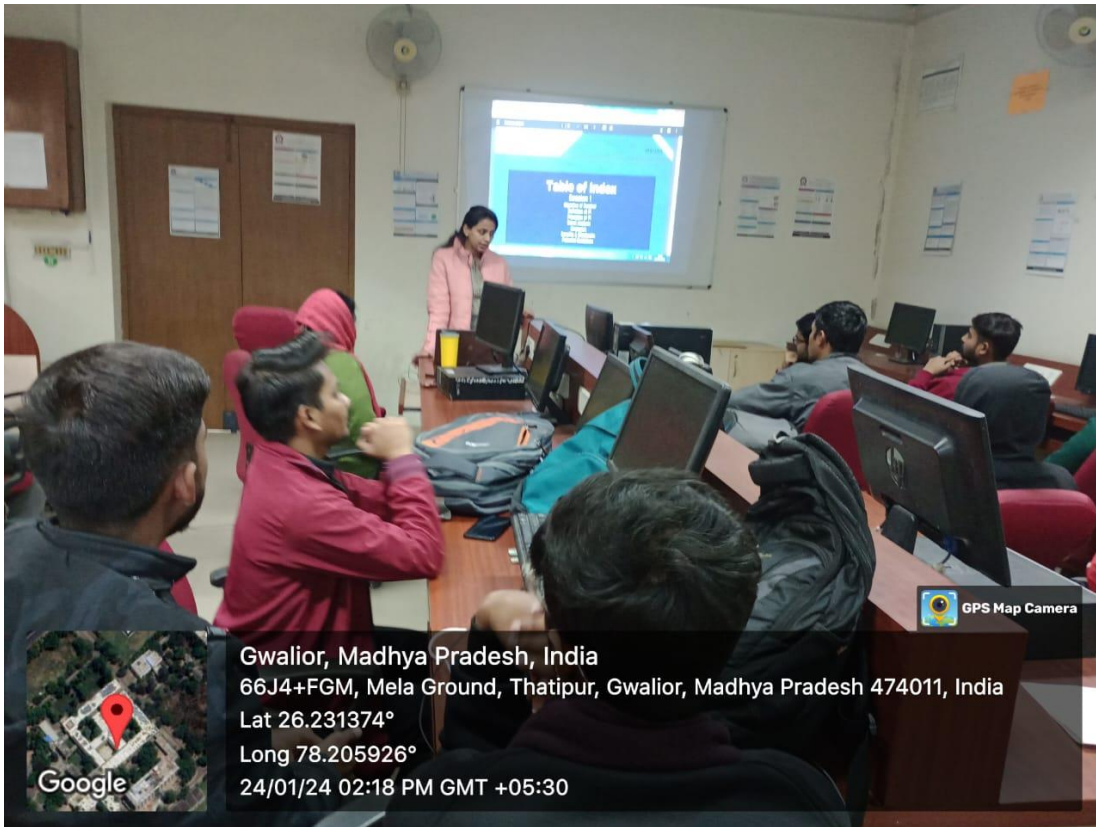
Restricted Not available unless: You belong to PMS 170615

+ Add an activity or resource

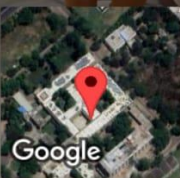
+ One Day Seminar on Chemical Process Intensification Edit

- + ChemSep Distillation Edit
- Restricted Not available unless: You belong to One day Seminar on Chemical Process Intensification Edit
- + PPT Edit
- Restricted Not available unless: You belong to One day Seminar on Chemical Process Intensification Edit
- + Quiz1 Edit
- Restricted Not available unless: You belong to One day Seminar on Chemical Process Intensification Edit
- + Book on PI Edit
- Restricted Not available unless: You belong to One day Seminar on Chemical Process Intensification Edit

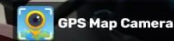




Gwalior, Madhya Pradesh, India  
66J4+FGM, Mela Ground, Thatipur, Gwalior, Madhya Pradesh 474011, India  
Lat 26.231374°  
Long 78.205926°  
24/01/24 02:18 PM GMT +05:30

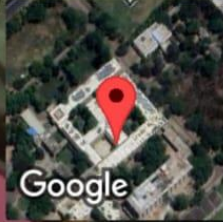


Gwalior, Madhya Pradesh, India  
66J4+FGM, Mela Ground, Thatipur, Gwalior, Madhya Pradesh 474011, India  
Lat 26.231374°  
Long 78.205926°  
24/01/24 02:17 PM GMT +05:30





GPS Map Camera



Gwalior, Madhya Pradesh, India  
66J4+FGM, Mela Ground, Thatipur, Gwalior, Madhya Pradesh 474011, India  
Lat 26.231374°  
Long 78.205926°  
24/01/24 02:18 PM GMT +05:30