



Startup Cell, MITS Gwalior

Presenter:

Ankit Tiwari

Assistant Professor

Electrical Engineering

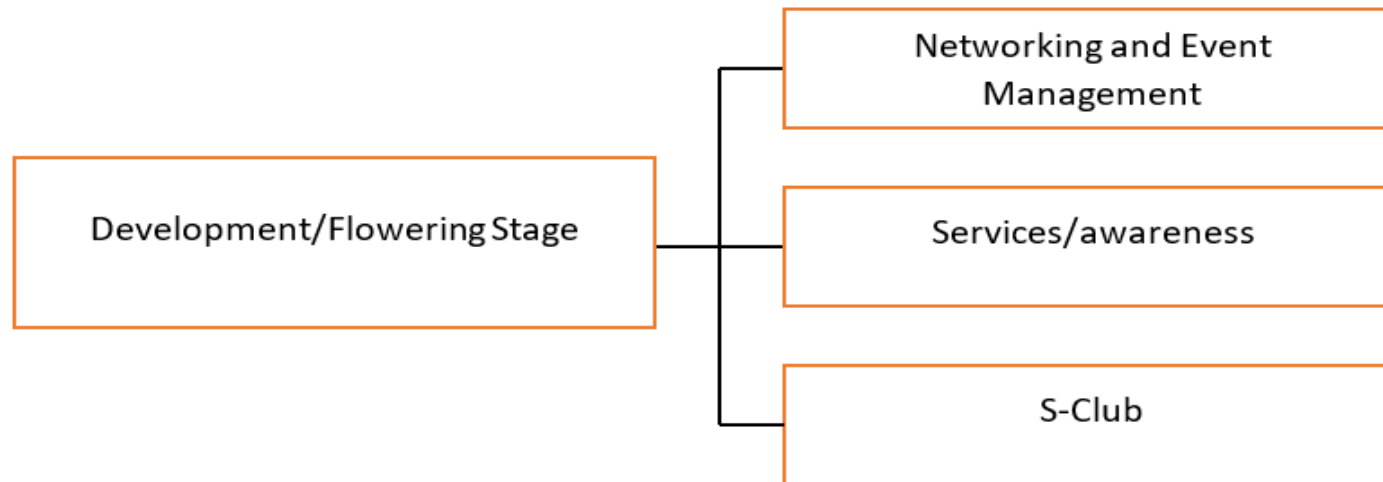


E-cell Matrix

Brainstorm	Interact	Integrate
Entrepreneurship Awareness	Industrial Visits	Campus Companies
Eminent Lectures	Meet people (alumni & Industrial Experts)	Startup incubation
E Discussion	Networking and reaching out by taking part in competitions	Technical Training

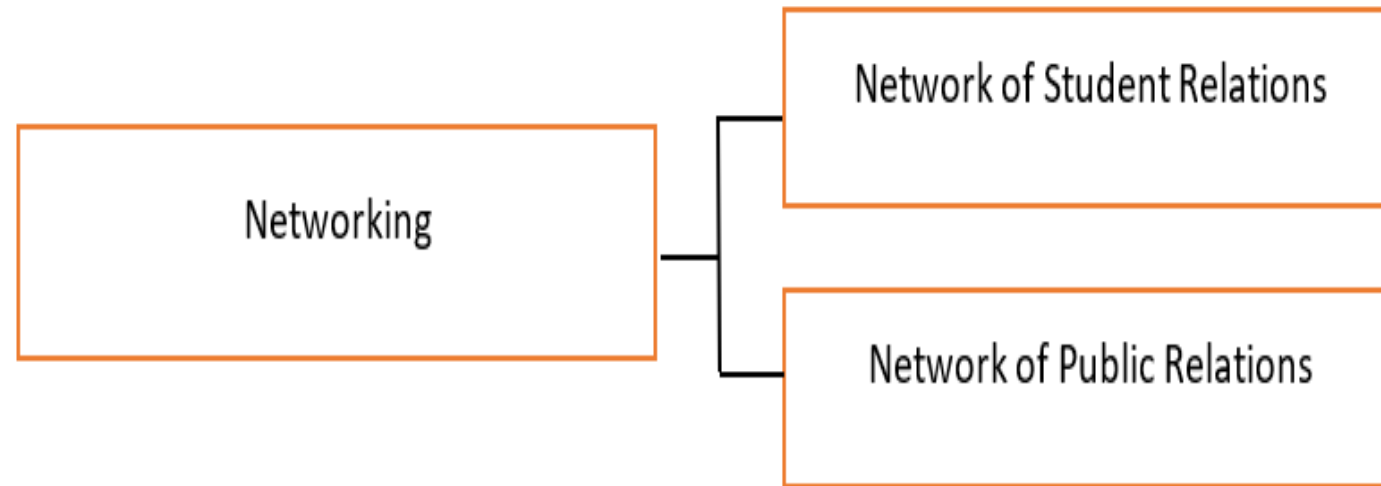
MIT'S E-Cell

- Used the concept of fragmentation (Restructuring/ unbundling) taking small pieces of E-cell value chain and making it more student-friendly or optimise internal processes.
- Divided the E-cell into five fragment with assigned task
- Development/Flowering Stage



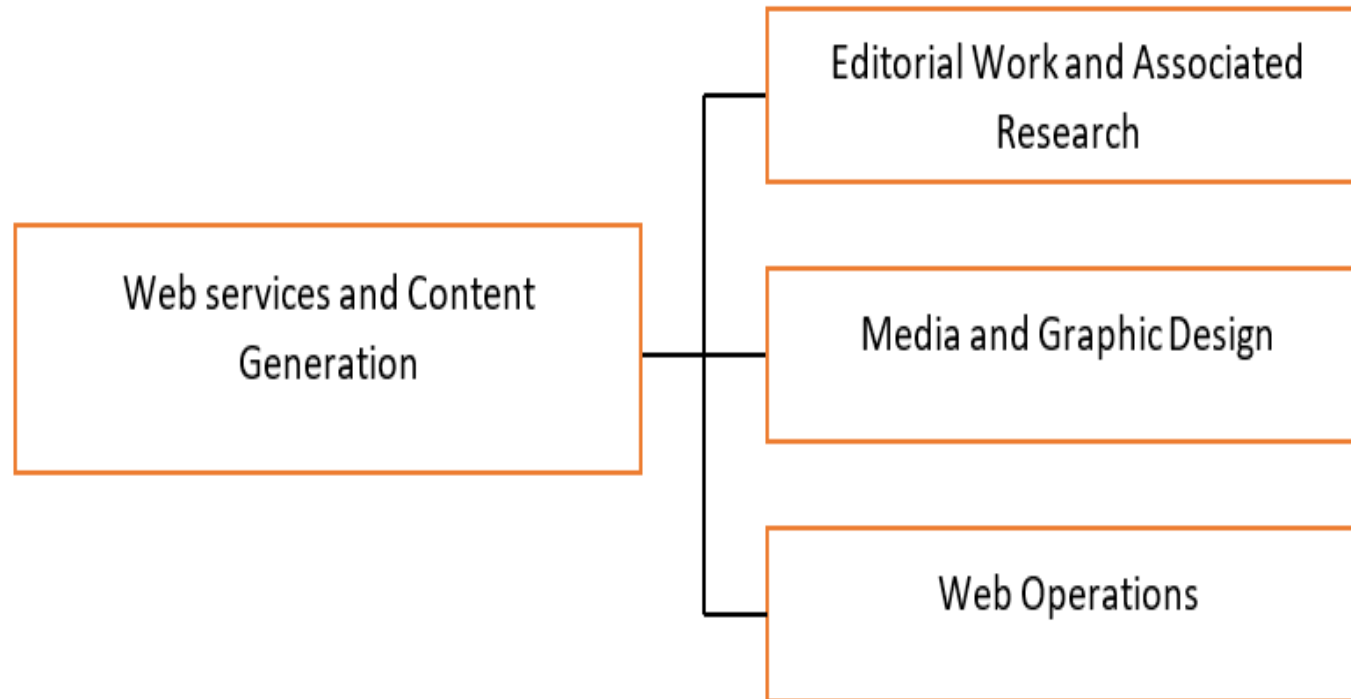
MITS E-Cell

- Networking



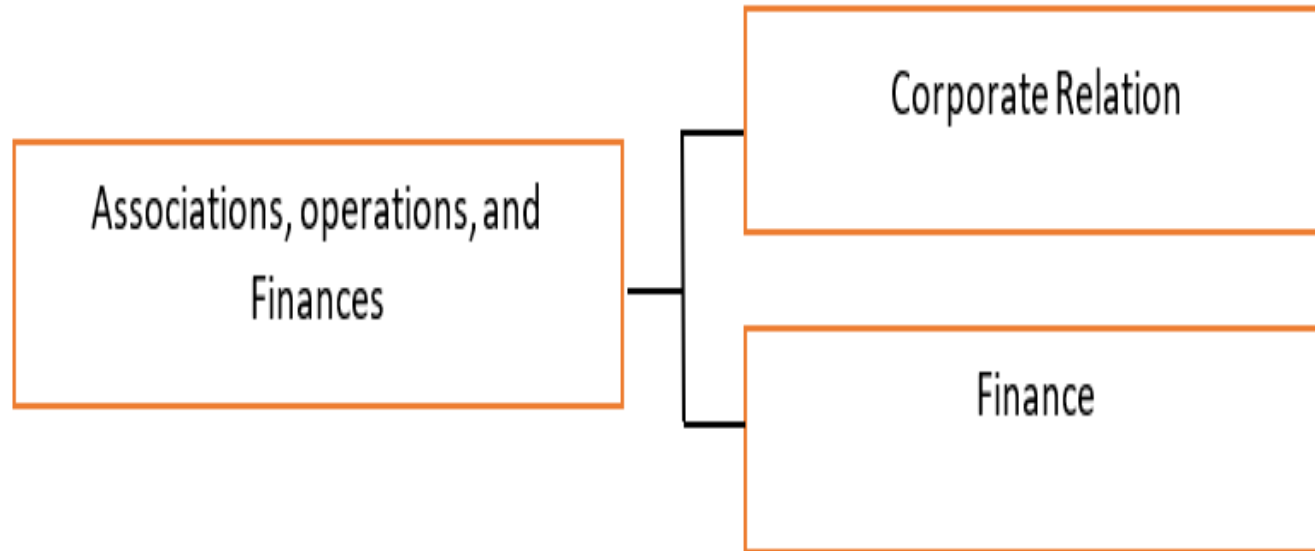
MIT E-Cell

- Web services and Content Generation



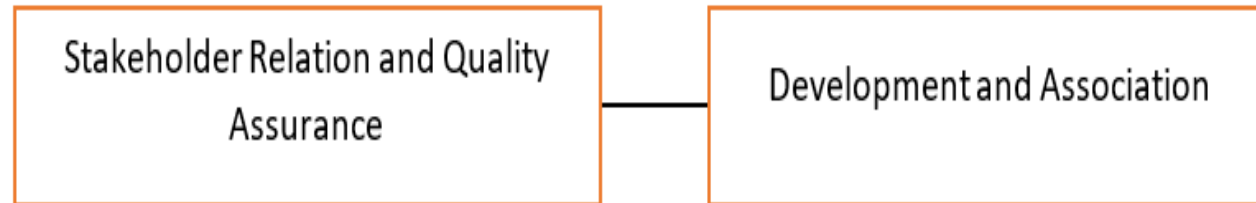
MIT S E-Cell

- Association Operation and Finance

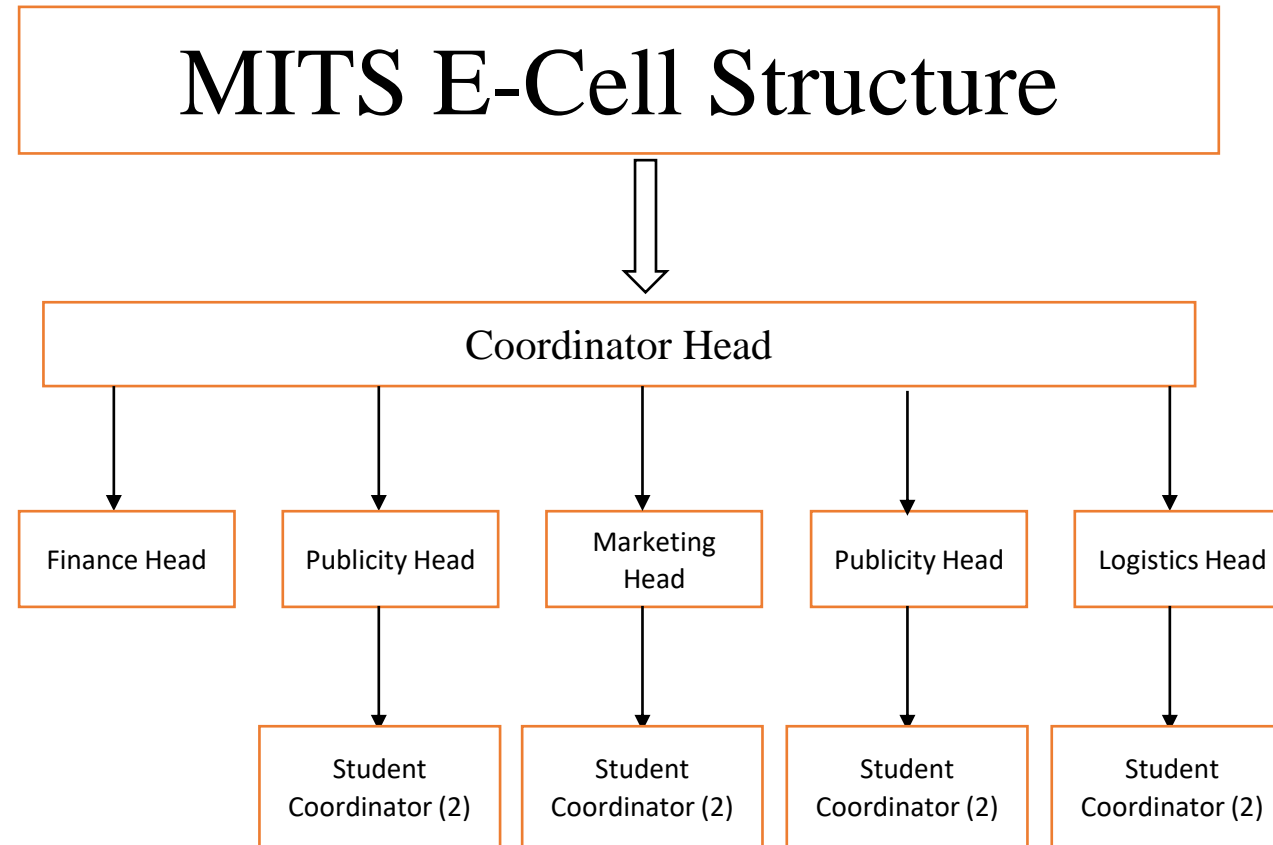


MITS E-Cell

- Stakeholder Relation and Quality Assurance



MIT S E-Cell



Short Term Goals (1 Years-2 years)



Interaction with entrepreneurs: -
To provide a platform for
Communication with entrepreneurs



**Impart entrepreneurial
education/Skills:** - Through various
trainings and exercise



**Creating a Network of
entrepreneurship:** -Arranging
vibrant interaction with
organizations

Short Term Goals (1 Years-2 years)

- (Strategies used: - Awareness, Motivational Program, Training to create Presentation & Write report, Workshop & Bootcamp, Idea Pitching Session, Exhibition of Innovative Products, Competition)
- Every Month: - E Discussion (Compulsory Activity)
- Activities planned/suggested for supporting the short-term goals:-



Upcoming Activities

Expert Lecture
from ISRO Scientist
(Fuel-Cell Expert)

Expert Lecture
from CISCO (IT
services)

Expert Lecture
from TCS/ Infosys
(IT services)

Successful Start-
ups of IITs
visits/lecture

Business Situation
Exercise

Leanhack

Start-up walk
Program

Financial aid for
Startup Companies

Digital Magazine
of Startup
activities of the
institute

Entrepreneurship
Awareness Drive
with S-Cell

Long Term Goal (5 Years)



Formation of Industry Institute
Partnership Cell: - MoUs with
external incubators and
accelerators



Formation of Centre for
innovation Design and
Incubation (Planning,
designing, and prototyping of
product)



Motivate students to develop
their own start-ups



Faculty Start-ups



Create corpus fund to seed
ventures/start-ups



Organisation of Internship
Mela – I at campus



Thank You

